

CL-II TASK LIGHT INSTALLATION

SPRING BAR MOUNTING

ASSEMBLY PROCEDURE FOR HORIZONTAL STEEL OFFICE SHELVES AND OVERHEAD CABINETS WITH FRONT AND BACK LEDGE:

1. MAKE SURE SPRING BARS MATCH SHELF WIDTH. VARIOUS LENGTHS ARE AVAILABLE UPON REQUEST. IF BARS ARE TOO SHORT, INSTALLATION SECURITY MAY BE JEOPARDIZED. IF BARS ARE TOO LONG, ADJUSTMENTS MAY BE HAMPERED.
2. INSERT SPRING BAR THROUGH SLOTS LOCATED AT EACH END OF LIGHT FIXTURE. A "BUMP" BETWEEN THE SLOTS PREVENTS BARS FROM FALLING OUT DURING INSTALLATION. (SEE FIGURE 1)
3. REST SPRING BARS ON BACK LEDGE OF SHELF.
4. BEND SPRING BARS SIDWAYS TO CLEAR FRONT LEDGE. ROTATE LIGHT FIXTURE UP AGAINST SHELF AND RELEASE SPRING BARS. (SEE FIGURE 2)
5. ONCE LIGHT FIXTURE IS MOUNTED, LIGHT CAN BE ADJUSTED TO PERSONAL PREFERENCE. (LEFT, RIGHT, FRONT, AND BACK)

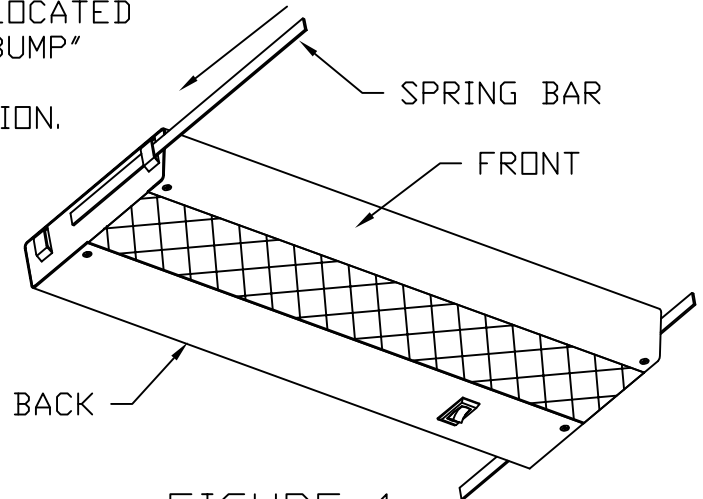


FIGURE 1

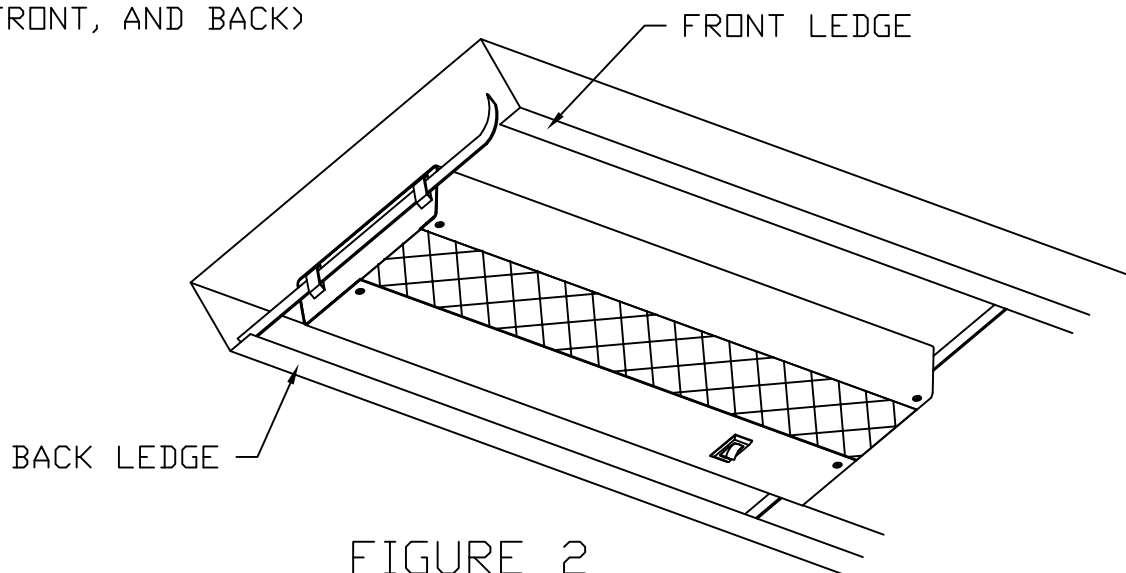


FIGURE 2

IMPORTANT: SAVE THESE INSTRUCTIONS FOR LAYOUT CHANGES.

Illustrations and specifications are based on the latest product information available at the time of publication. The right is reserved to make changes in design and specification at any time, without notice, and also to discontinue products.

110482 REV C LMJ

CL-II TASK LIGHT INSTALLATION

SPRING BRACKET MOUNTING

ASSEMBLY PROCEDURE FOR HORIZONTAL STEEL OFFICE SHELVES AND OVERHEAD CABINETS WITH FRONT AND BACK LEDGE.

TOOLS REQUIRED: PHILLIPS SCREW DRIVER.
PARTS: (2) SPRING BRACKETS, (2) SCREWS

ASSEMBLY PROCEDURE:

(10"-17" NOMINAL DEPTH)

NOTE: SHELVES OVER 13" WIDE REQUIRE EXTENSION BRACKET KIT PART NO. 160325.

ATTACH SPRING BRACKET TO LIGHT FIXTURE BY PLACING DETENT INTO MOUNTING SLOT AND SECURING WITH SCREW; ONE ON EACH SIDE. (SEE FIGURE 1)

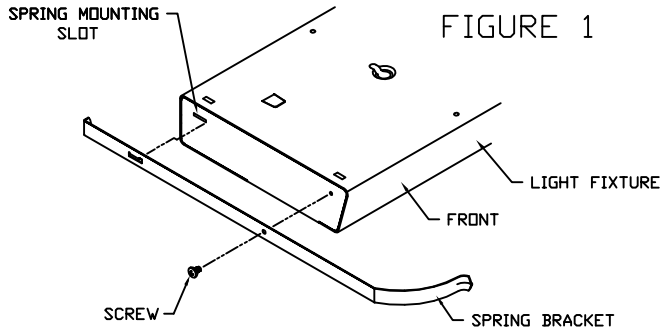


FIGURE 1

- PULL FIXTURE FORWARD (THIS WILL DEFLECT FRONT OF SPRING BRACKETS) UNTIL BACK OF SPRING BRACKET CLEARS BACK LEDGE OF SHELF. RAISE FIXTURE UP FLAT AGAINST BOTTOM OF SHELF. (SEE FIGURE 3)

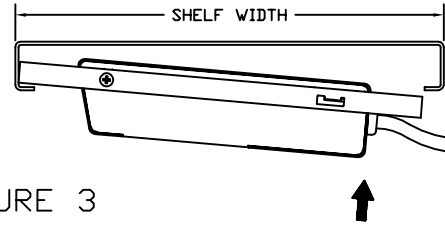


FIGURE 3

- MOVE FIXTURE BACK SO THAT BACK OF SPRING BRACKET IS RESTING ON BACK LEDGE OF SHELF. (SEE FIGURE 4)

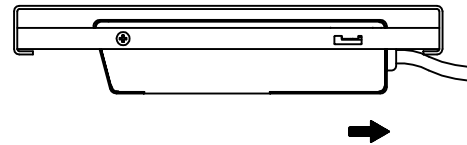


FIGURE 4

INSTALLATION PROCEDURE:

- REST FRONT OF SPRING BRACKETS ON INSIDE OF FRONT LEDGE OF SHELF. (SEE FIGURE 2)

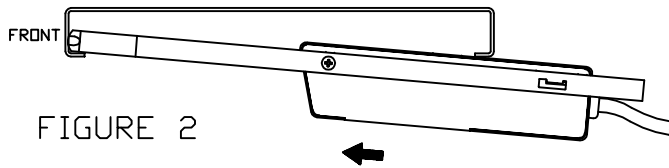


FIGURE 2

KEYHOLE MOUNTING

ASSEMBLY PROCEDURE FOR HORIZONTAL WOOD OFFICE SHELVES.

TOOLS REQUIRED: PHILLIPS SCREW DRIVER.

ASSEMBLY PROCEDURE:

INSTALL (2) #8 X 3/8 PHILLIPS HEAD WOOD SCREWS INTO SHELF "X" DISTANCE APART (SEE CHART), UNTIL THERE IS APPROXIMATELY 3/16" BETWEEN HEAD OF SCREW AND SHELF BOTTOM. (SEE FIGURE 1)

NOTE: MAKE SURE LIGHT IS LOCATED FRONT TO BACK AND SIDE TO SIDE.

CHART: WOOD SCREW MOUNTING DISTANCE

FIXTURE DESIGNATION	DISTANCE X
18" FIXTURE	7"
24" FIXTURE	10"
30" FIXTURE	16"
36" FIXTURE	22"
42" FIXTURE	28"
48" FIXTURE	34"
60" FIXTURE	46"
72" FIXTURE	52"

INSTALLATION PROCEDURE:

- REMOVE LENS AND BULB TO REVEAL KEYHOLES.
- ALIGN KEYHOLE SLOTS WITH SCREW HEADS. PASS SCREW HEAD THROUGH LARGE END OF KEYHOLE SLOT. SLIDE LIGHT SO SCREWS PASS INTO NARROW END OF KEYHOLE SLOT. TIGHTEN SCREWS. (SEE FIGURE 2)
- REPLACE LENS AND BULB.

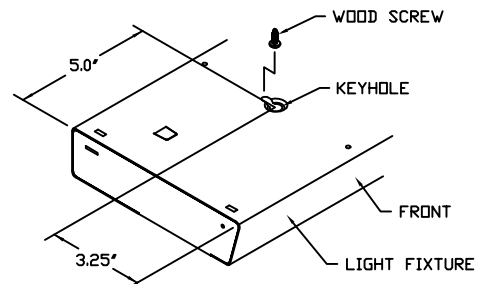


FIGURE 2

FIGURE 1

